

TUDOR REVIVAL



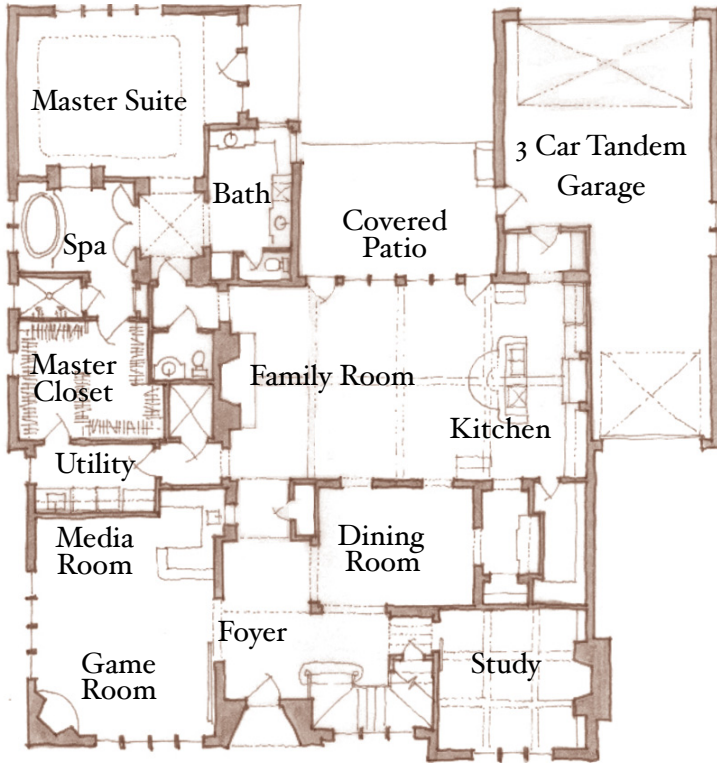
ORIGINS OF THE STYLE

Many suburban homes throughout the country in the early 20th century were based on the architectural style commonly known as Tudor. An architectural style with a fairly wide latitude of expression, the “Tudor” label is loosely based on the architecture of Medieval England, from the 15th through the 17th centuries. An identifying Tudor feature is a high-pitched roof, usually side gabled and with one or more dominate, front facing cross gables. Tudor style houses often feature striking decorative timbers, fashioned after Medieval construction techniques. This decorative woodwork comes in many different designs, with stucco or patterned brick between the timbers.

The roof lines of Tudor homes are almost always graced with massive chimneys, constructed of brick or stone and capped with elaborate chimney pots.

In the United States, Tudor styling takes on a variety of forms ranging from elaborate mansions to modest suburban homes with mock masonry veneers. The Tudor style was most popular in America during the 1920s and early 1930s, with somewhat of a resurgence in the 1970s under the “Neo-Tudor” classification. However, the Neo-Tudor is a somewhat modified and diluted form of the more historically correct Tudor Revival style.

Design Guide



First Floor Plan.

Heritage Design Studio is pleased to present this original Tudor Revival home for the Design Guide.

This 4 bedroom design places the master suite on the ground floor with an optional elevator leading to the secondary 3 bedrooms and baths on the 2nd floor. Note how the Master Suite splits the bathing areas from the sinks, providing ample light and sitting in both spaces. The downstairs also features a single dining area, joint Game Room and Media Room with a Wet Bar. This space can be closed off from the foyer with a large paneled sliding door. A downstairs Study is accessed from underneath the staircase.

While the majority of Tudor Revival architecture uses a wide range of exterior materials, this particular design is crafted mostly with a stone veneer, with some rough cedar accents and a brick chimney. Note the deeply recessed arched entry and matching arched wood entry door, as well as the very clean and simple roof line

1st floor (a/c): 2900 s.f.
2nd floor (a/c): 1050 s.f.
Total (a/c): 3950 s.f.

IDENTIFYING FEATURES OF THE TUDOR REVIVAL STYLE FOR THIS DESIGN

